



# Explore the Rivers of Bharat

Largest Pavilion of  
Digital Fullbody  
Tiles

MASTER  
COLLECTION '24



INTRODUCING  
THE RIVERS OF  
BHARAT





DIGITAL  
PRINT

PUNCH  
EFFECT

FULLBODY  
TILES

DIGITAL PRINTING  
TECHNOLOGY



# Product Features

Digital Full body tiles are designed to offer top-tier performance with low water absorption, making them ideal for wet areas and high-traffic zones.



WATER  
ABSORPTION  
<0.05%



HIGH  
STRENGTH



MAINTENANCE  
FREE



CHEMICAL  
RESISTANCE



ABRASION  
RESISTANCE

# Product Applications

Its Toughness And Grit Make It The Optimum Choice For High-traffic Areas Where It Show Its Endurance Along With Its Majestic Looks.



FLOOR  
APPLICATION



FACADE &  
WALL



OUTDOOR &  
SIT OUT AREA



SWIMMING  
POOL  
BORDER



GARDEN &  
PATHWAY



**GANGA**  
SERIES

Explore  
the Rivers of  
Bharat

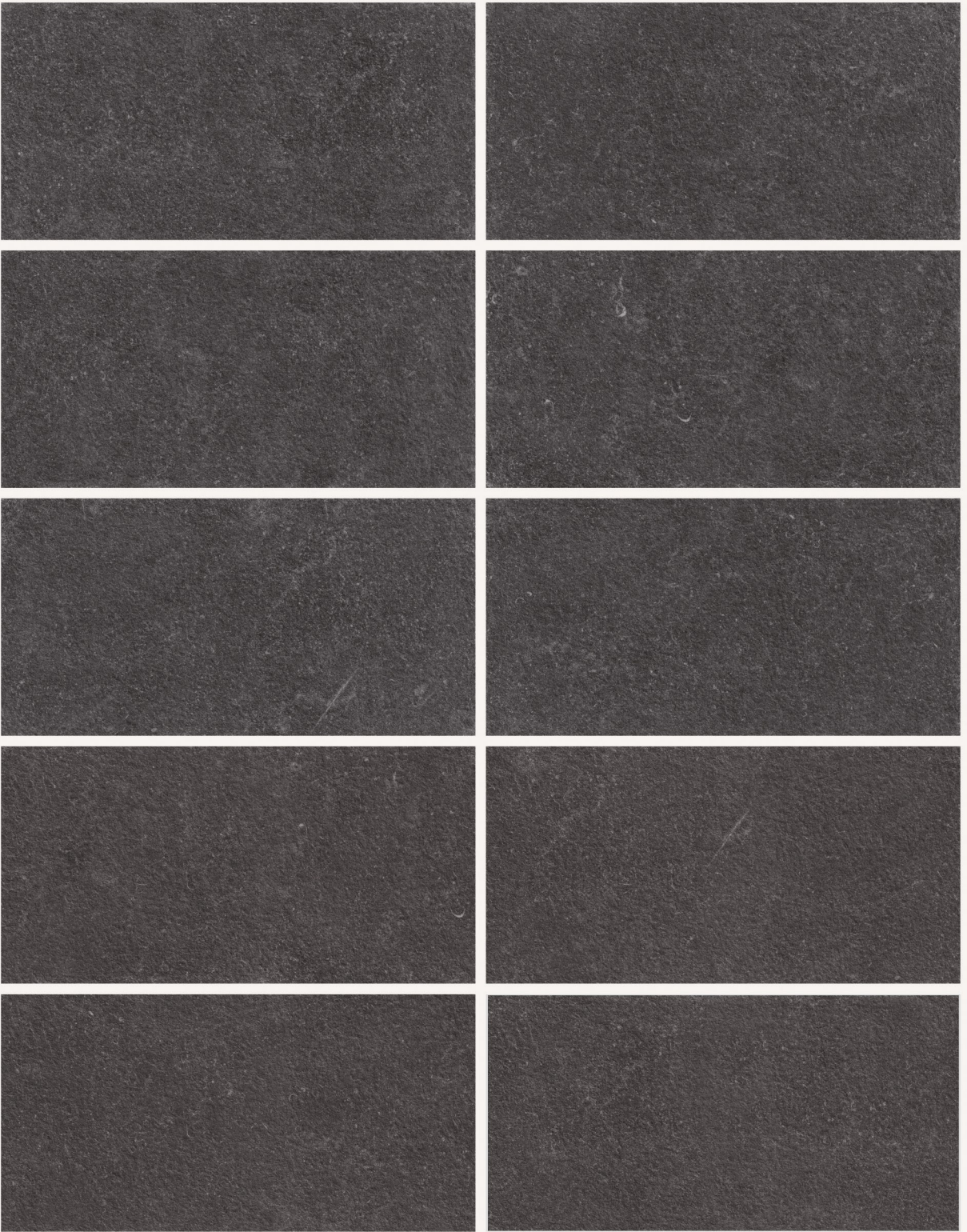
**600X1200MM  
[9MM THICKNESS]  
DIGITAL FULLBODY**



GANGA  
GRAPHITE



RANDOM - 10 FACES



Size  
**600x1200mm**

Finish  
**Rustic**

Thickness  
**9mm**

FEATURES



WATER  
ABSORPTION  
<0.05%



HIGH  
STRENGTH



MAINTENANCE  
FREE



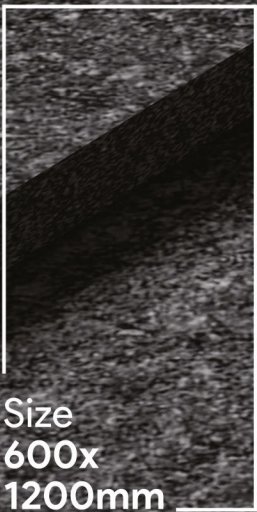
CHEMICAL  
RESISTANCE



ABRASION  
RESISTANCE



**DIGITAL  
FULLBODY TILES**



Size  
600x  
1200mm

COLLECTION '24

**GANGA**  
SERIES





Preview of\_  
**GANGA GRAPHITE**

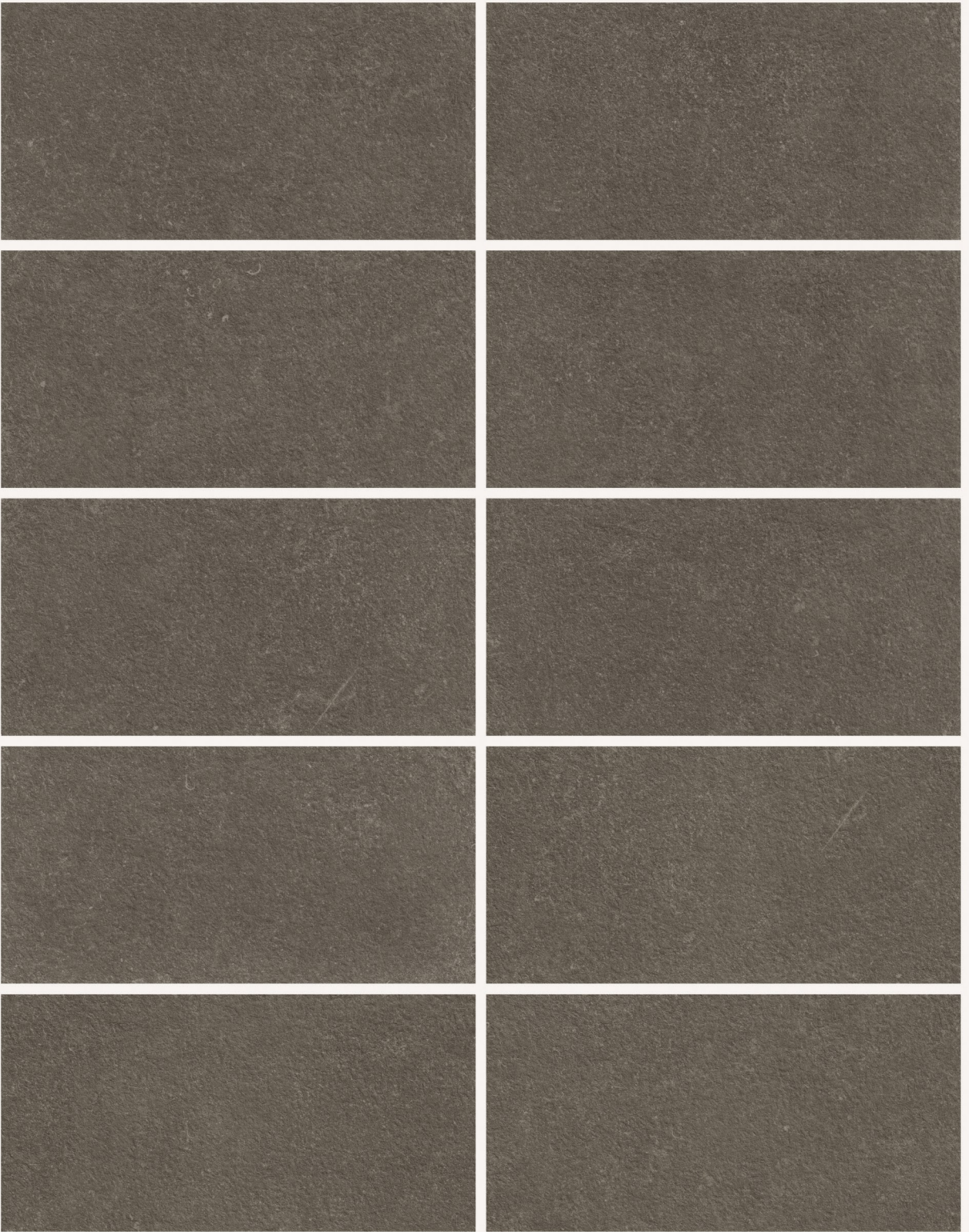


The background of the entire image is a dark brown, textured surface, resembling aged paper or a coarse fabric. The texture is uneven, with subtle variations in tone and some faint, irregular patterns. The overall appearance is that of a high-quality, natural material.

# GANGA TERRAIN



RANDOM - 10 FACES



Size  
**600x1200mm**

Finish  
**Rustic**

Thickness  
**9mm**

FEATURES



WATER  
ABSORPTION  
<0.05%



HIGH  
STRENGTH



MAINTENANCE  
FREE



CHEMICAL  
RESISTANCE



ABRASION  
RESISTANCE



**DIGITAL  
FULLBODY TILES**



Size  
600x  
1200mm

COLLECTION '24

**GANGA**  
SERIES





Preview of\_  
**GANGA TERRAIN**



## Technical Specification

TECHNICAL DETAILS	STANDARD AS PER ISO-13006/EN176 GROUP BIa	MEAN VALUE OF FULL BODY VITRIFIED TILES	METHOD OF TEST
Deviation In Length & Width	± 0.60%	± 0.10%	ISO-10545-2
Deviation In Thickness	+ 5.00%	+2.00%	ISO-10545-2
Straightness Of Sides	± 0.50%	± 0.10%	ISO-10545-2
Rectangularity	+ 0.60%	± 0.10%	ISO-10545-2
Surface Flatness	± 0.50%	± 0.10%	ISO-10545-2
Glossiness	Gloss Meter	Min. 90%	Glossometer
Water Absorption	≤ 0.50%	E ≤ 0.03%	ISO-10545-3
Breaking Strength	1300 N	2000 N	ISO-10545-4
Abrasion Resistance	Max. 175mm	Max. 145mm <sup>3</sup>	ISO-10545-6
Moh's Hardness	Min. 6	≤ 6*	EN101
Frost Resistance	Frost Proof	Frost Proof	ISO-10545-12
Thermal Shock	No Damage	No Damage	ISO-10545-9
Moisture Expansion	Nil	Nil	ISO-10545-10
Thermal Expansion	<9 x 10 <sup>-6</sup>	< 6 x 10 <sup>-6</sup>	ISO-10545-8
Resistance of House Hold Chemical	No Damage	No Damage*	ISO-10545-13
Stain Resistance	Resistance	Resistance*	ISO-10545-14
Slip Resistance(friction Co Efficient)	> 0.40	> 0.40	ISO-10545-17

## Packing Details

Size	Surface	Tiles/Box	Thickness (mm) (+/- 0.2mm)	Box Weight (+/- 0.5KG)	Thickness	Sq. Mtr. / Box	Box/Pallet	Pallet Container	Box Container	Sq. Mtr. Container
600x1200mm	Matt	2	9.1	29.5	9.0mm	1.44	12x64 Box 5X30 Box	17	918	1321.92



